

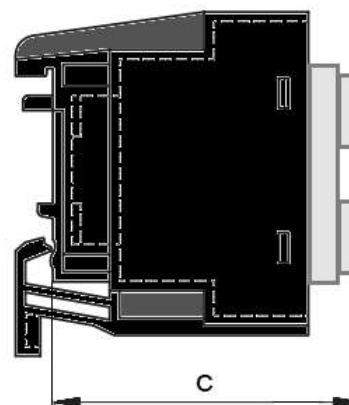
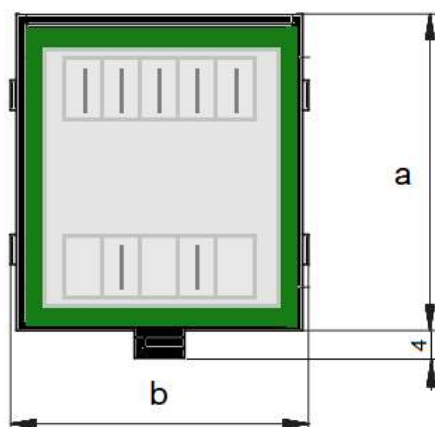
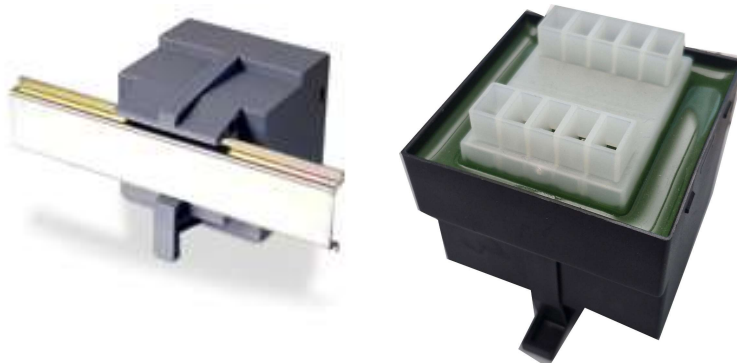
TRASFORMATORI TRV BARRA DIN

Da 25 a 100 VA

CARATTERISTICHE COSTRUTTIVE:

- INCAPSULATI IN RESINA EPOSSIDICA
- VOLTAGGIO INGRESSO DA 230 A 400V
- TEMPERATURA AMBIENTE 40°C
- FREQUENZA 50/60 Hz
- GRADO IP 20
- CLASSE DI ISOLAMENTO B
- FISSAGGIO BARRA DIN

CE



32

MODELLO	POTENZA (VA)	TENSIONE PRIMARIO (V)	TENSIONE SECONDARIO (V)	A mm	B mm	C mm	PESO Kg.
VMV25-XXX-KK-Y	25	230.....400	4.....48	67	66	67	0,7
VMV40-XXX-KK-Y	40	230.....400	4.....48	67	66	67	0,9
VMV50-XXX-KK-Y	50	230.....400	4.....48	70	72	73	1,0
VMV60-XXX-KK-Y	60	230.....400	4.....48	70	72	73	1,1
VMV75-XXX-KK-Y	75	230.....400	4.....48	77	84	82	1,5
VMV100-XXX-KK-Y	100	230.....400	4.....48	77	84	82	1,7

XXX: Tensione nominale primaria KK: Tensione nominale secondaria (a carico)

